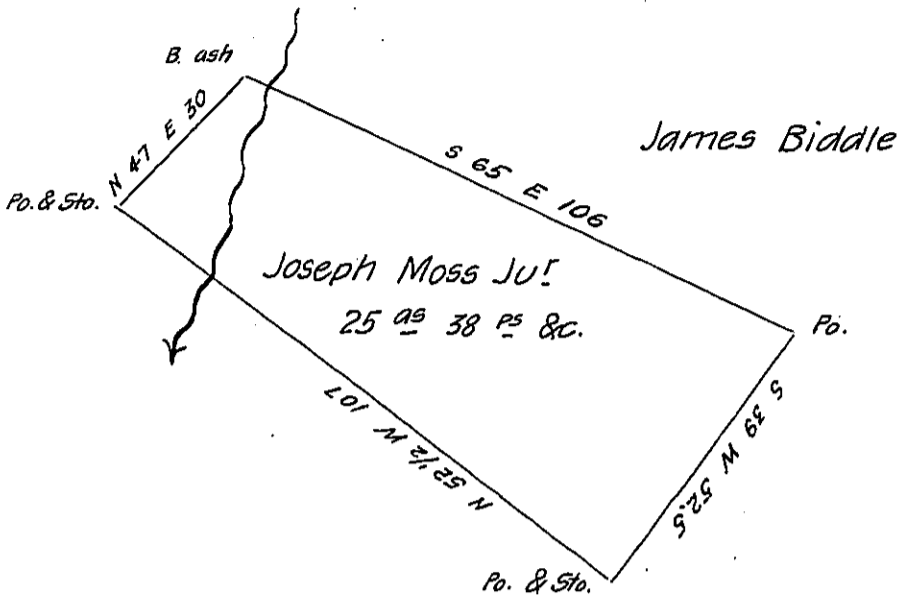


John Bowman



William

TAYLOR

Draft of a tract of improved Land situate in Union township
 Luzerne County adjoining James Biddle & Others Containing twenty five
 acres & thirty eight perches with the allowance of six per cent &c.

The above described tract of Land was Surveyed by Henry
 Colt the late deputy Surveyor the ninth day of April A^o Dⁱ 1835 for Joseph
 Moss Jur. by virtue of his warrant dated the Eighth day of December
 A^o Dⁱ 1834 and certified by me this 24th day of June A^o Dⁱ 1837

Zebulon H. Stevens

To

D.S.

John Taylor Esqr

Surveyor General.

IN TESTIMONY that the above is a copy of the original remaining on file in
 the Department of Internal Affairs of Pennsylvania, made
 conformably to an Act of Assembly approved the 16th day of
 February, 1833, I have hereunto set my Hand and caused
 the Seal of said Department to be affixed at Harrisburg,
 this third day of May 1906.

Isaac R. Brown
 Secretary of Internal Affairs.